

PPE FACE SHIELD EXTENSION ASSEMBLY INSTRUCTIONS



INCLUDED COMPONENTS

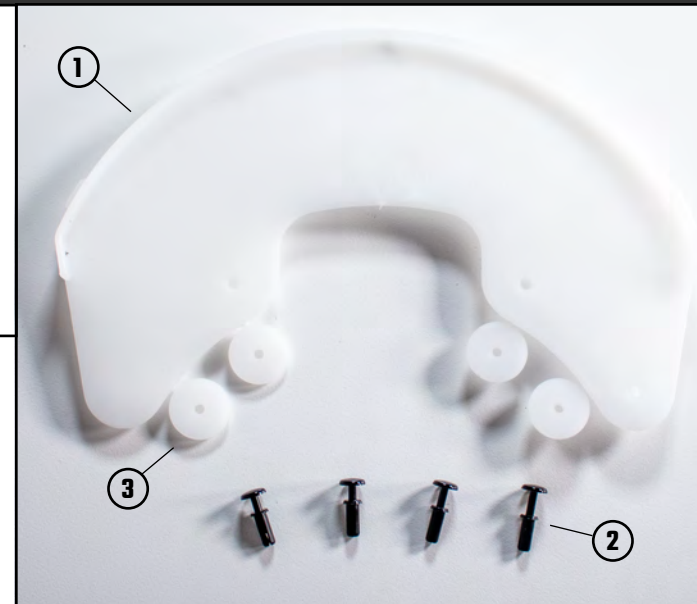
- 1 EXTENSION (1)
- 2 EXTENSION PINS (4)
- 3 WASHERS (4)
- 4 MOB ARMOR PPE FACE SHIELD (with the face shield removed from visor)

CONTACT

WWW.MOBARMOR.COM
(805) 214-1815
@MOBARMOR

MOB ARMOR HEADQUARTERS

2360 THOMPSON WAY, SUITE E
SANTA MARIA, CA 93455



WARNING: The use of Mob Armor Face Shield used in a healthcare setting has not been tested or approved by the National Institute for Occupational Safety and Health, the Centers for Disease Control, the U.S. Food and Drug Administration, or any other regulatory agency, and has not been proven safe or effective with respect to protection against any infectious or communicable disease, including without limitation, COVID-19. Any user of the Mob Armor Face Shield in such manner does so solely at his or her own risk.

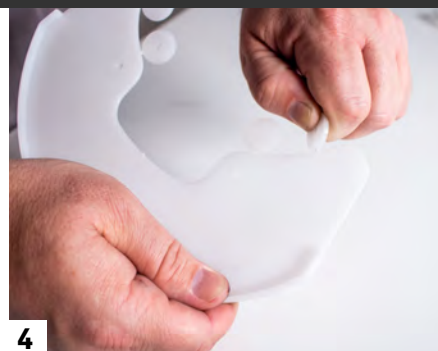
MOB ARMOR EXPRESSLY DISCLAIMS ALL WARRANTIES, EXPRESS, IMPLIED OR STATUTORY, WITH RESPECT TO THE FACE SHIELD SUPPLIED UNDER THIS AGREEMENT, INCLUDING WITHOUT LIMITATION ANY IMPLIED WARRANTY OF MERCHANTABILITY, FITNESS FOR A PARTICULAR PURPOSE, NONINFRINGEMENT, OR ARISING FROM COURSE OF PERFORMANCE, DEALING, USAGE OR TRADE. WITHOUT LIMITING THE GENERALITY OF THE FOREGOING, MOB ARMOR TAKES NO CLAIM, REPRESENTATION, OR WARRANTY OF ANY KIND AS TO THE UTILITY OF THE PRODUCTS FOR CUSTOMER'S INTENDED USES.

PREPARE FOR ASSEMBLY

- 1 Clean surface of intended assembly location.
- 2 Wash hands or sanitize.
- 3 Lay out, and identify included components.

Once assembled, reuse by cleaning your Mob Armor Face Shield with 99% isopropyl alcohol (IPA), bleach, 3% hydrogen peroxide. (Do not microwave)

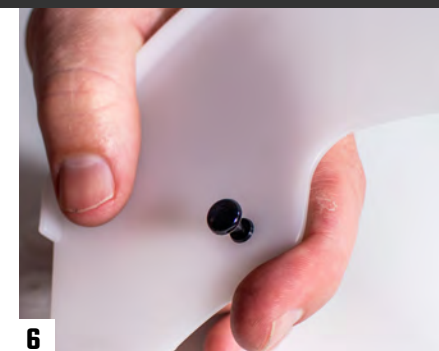
PART 1: PREPARE EXTENSION



4 Twist off all four of the washers, and set aside.



5 With lip of visor facing up, push the extension pins into the holes.



6 Push all four pins into the extension, then flip over.

PPE FACE SHIELD EXTENSION ASSEMBLY INSTRUCTIONS



PART 2: ATTACH EXTENSION TO MOB ARMOR FACE SHIELD VISOR



7

Line up the pins of the extension with the holes of your original Mob Armor Face Shield visor.



8

Locate the four washers.



9

Press the each washer onto a pin, with lip facing up. Continue with all four.



10

Flip over, and press pins all the way through the visor and washers.



11

Continue to press in each pin, to lay flat like the far right pin in this image.



12

Re-install the face shield onto extension visor.